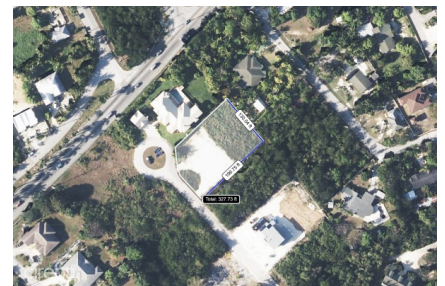
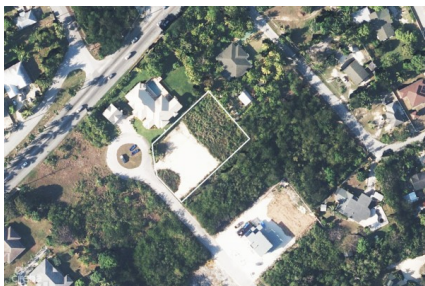


## LAND 0.57 ACRES SAVANNAH

Lower Valley, Cayman Islands

MLS# 419488

**CI\$330,000**





**Debi Bergstrom**  
dbergstrom@edgewater.ky

Situated at the end of picturesque Lavender Way in Savannah, Grand Cayman, this 0.6-acre parcel offers privacy, space, and the perfect setting to build your dream home. Located in a quiet cul-de-sac, the property provides a rare sense of seclusion while remaining just minutes from Countryside Shopping Village, schools, and the southern coastline. The northeast-facing garden captures the island’s gentle morning sun and prevailing breezes—an ideal orientation in Cayman that brings natural light and cool comfort to outdoor living. This subtle advantage adds lasting value and enjoyment to everyday life. Lavender Way itself suggests calm and charm, setting the tone for a home that offers both sanctuary and convenience. Whether you're seeking to create a family home, a tropical retreat, or a long-term investment, this land presents a unique opportunity in a fast-moving market. As land in Grand Cayman becomes increasingly scarce, parcels in peaceful, well-positioned neighbourhoods like this are highly sought after. This is more than just land for sale—it's the beginning of something meaningful. Discover the potential of Lavender Way and imagine what you could build here. A breeze, a sunrise, and a blank canvas await.

Essential Information

|                 |         |        |                         |
|-----------------|---------|--------|-------------------------|
| Type            | Status  | MLS    | Listing Type            |
| Land (For Sale) | Current | 419488 | Low Density Residential |

Key Details

|         |        |     |      |                |
|---------|--------|-----|------|----------------|
| Width   | Depth  | Bed | Bath | Block & Parcel |
| 130.00  | 195.00 | 0   | 0    | 32B,239        |
| Acreage |        |     |      |                |
| 0.57    |        |     |      |                |
| Den     | Sq.Ft. |     |      |                |
| No      | 0.00   |     |      |                |

Additional Features

|             |                         |               |       |
|-------------|-------------------------|---------------|-------|
| Views       | Zoning                  | Road Frontage | Soil  |
| Garden View | Low Density residential | 140           | Other |