



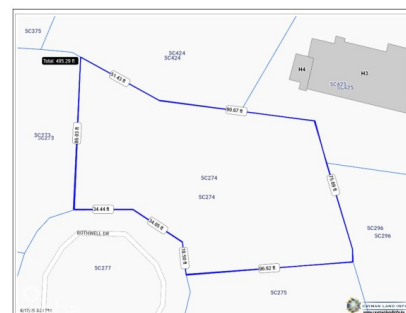
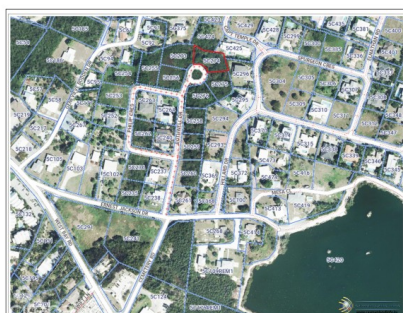
43 Vibert Bodden Drive, P.O. Box 30132 SMB George Town, Grand Cayman KY1-1201
Cayman Islands, British West Indies.
+1 (345) 946-3343
info@edgewater.ky |

WEST BAY HOUSE LOT ACROSS FROM CEMETERY BEACH

Seven Mile Beach, Cayman Islands

MLS# 419439

CI\$465,000





Debi Bergstrom
dbergstrom@edgewater.ky

Welcome to one of West Bay’s best-kept secrets, a 0.28-acre homesite nestled at the end of a quiet cul-de-sac in the peaceful Upper Land community, just beyond The Highlands. This rare offering presents an exceptional opportunity to build a private retreat where lifestyle and location align effortlessly. Set in a serene, family-oriented neighborhood, the setting combines privacy with walkable access to one of Cayman’s most beloved beaches. Just a short stroll away, Cemetery Beach offers calm waters for morning swims and unforgettable sunset walks, a true local treasure. Everyday conveniences are within easy reach at Republic Plaza, including grocery, dining, and wellness offerings. And with Seven Mile Beach and Camana Bay just 10 minutes away, you're seamlessly connected to schools, restaurants, shopping, and more. The parcel’s footprint offers design flexibility to suit a variety of home styles, from a stunning family home to a garden-wrapped Island retreat. There’s ample room for a pool, outdoor lounge areas, or a peaceful courtyard, all tailored to your vision of comfortable Island living. If you’ve been waiting for the right parcel to invest in, this is one worth serious consideration. Contact us today to arrange your private site tour. *Property Boundaries/measurements in photos are approximate. Some Images Sourced from www.caymanlandsinfo.ky.

Essential Information

Type	Status	MLS	Listing Type
Land (For Sale)	Current	419439	Low Density Residential

Key Details

Width	Depth	Bed	Bath	Block & Parcel
140.00	86.00	0	0	5C,274
Acreage				
0.29				
Den	Sq.Ft.			
No	0.00			

Additional Features

Views	Zoning	Road Frontage	Soil
Inland	Low Density residential	86	Marl