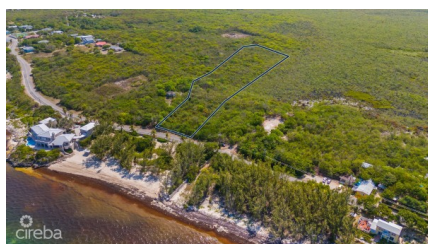


## EAST END LAND - 3.25 ACRES

East End, Cayman Islands

MLS# 419413

**US\$840,000**



**Debi Bergstrom**

dbergstrom@edgewater.ky

3.25 Acres. Prime Development Land in East End, Grand Cayman  
An exceptional opportunity awaits with this 3.25-acre parcel located in the serene and scenic East End of Grand Cayman. Whether you're a developer seeking your next project or an investor looking to secure land in one of the island's fastest-growing areas, this property offers outstanding potential.  
Property Highlights: • Size: 3.25 acres • Location: Peaceful East End, known for its natural beauty and growing appeal • Investment Value: Strong long-term appreciation potential in a steadily expanding area • Access: Convenient road access and close to essential infrastructure • Surroundings: Near beaches, diving sites, restaurants, and local attractions This land presents a rare chance to invest in Grand Cayman's future while enjoying the quiet charm of the East End. Whether you build now or hold for capital growth, this is a smart move in a sought-after location.

Essential Information

Type	Status	MLS	Listing Type
Land (For Sale)	Current	419413	Low Density Residential

Key Details

Width	Depth	Bed	Bath	Block & Parcel
170.00	780.00	0	0	75A,114
Acreage				
3.25				
Den	Sq.Ft.			
No	0.00			

Additional Features

Views	Zoning	Road Frontage	Soil
Garden View	High Density Residential	125	Other