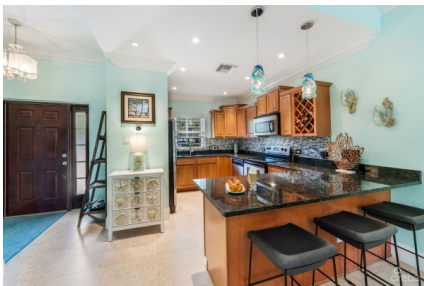


UPGRADED COASTAL ESCAPE CANAL FRONT TOWNHOUSE

Spotts, Cayman Islands

MLS# 419374

CI\$715,000





Debi Bergstrom
dbergstrom@edgewater.ky

Set in the quiet and ideally located community of Omega Bay, Coastal Escape is a beautifully upgraded 3-bedroom, 3.5-bath canal-front residence offering the perfect blend of comfort, function, and style. The interior features a bright open-plan layout that seamlessly connects the kitchen, dining, and living areas; ideal for entertaining or easy everyday living. Upstairs, every inch of space has been thoughtfully maximized with built-in storage, walk-in closets, and a fully enhanced laundry area that adds day-to-day ease. The top-floor primary suite doubles as a comfortable guest retreat and has been completely remodeled to include an expansive walk-in closet with custom built-ins, and a stunning, modern ensuite featuring a double vanity and a walk-in shower clad in floor-to-ceiling porcelain tiles. Throughout the home, clever storage solutions are tucked into every available corner, making the most of the spacious 2,165 sq ft layout. Recent updates include new flooring, custom lighting throughout, additional storage, and a tasteful coastal-inspired design upgrades that feels calm, clean, and considered in this meticulously maintained property. Step outside to a patio overlooking the water, with the dock just steps away for quick access to the North Sound. The complex also includes a canal-side pool and small gym, all within a pet-friendly 12-unit community. If you’ve been searching for a spacious move-in-ready canal townhome that pairs smart design with easy boating access and a top-tier location, Coastal Escape is the one to see. It is a must see!!

Essential Information

Type	Status	MLS	Listing Type
Residential (For Sale)	Current	419374	Condominium

Key Details

Bed	Bath	Block & Parcel
3	3.5	24B,205H7
Den	Year Built	Sq.Ft.
No	2007	2165.00

Additional Features

Lot Size	Views	Sea Frontage	Foundation
0.00	Canal Front	250	Slab
Floor Level	Furnished		
1	Yes		