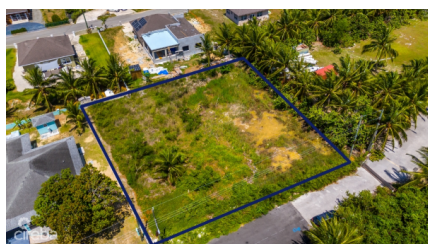


## WOODLAND DRIVE, LOWER VALLEY LOT

Lower Valley, Cayman Islands

MLS# 419358

**CI\$290,000**



**Debi Bergstrom**

dbergstrom@edgewater.ky

Don't miss this rare opportunity to own 0.45 acres on Woodlands Drive in Lower Valley—one of the last remaining lots in this well-established residential community. This generously sized parcel offers the ideal foundation for building a family home in a peaceful, sought-after neighborhood. While the land will require some fill to be fully developable, its location and potential make it a smart investment for homeowners or developers alike. Enjoy the benefits of a quiet residential setting with easy access to schools, shops, and other conveniences. With its great size and strategic location, this lot is the perfect canvas for creating your dream home.

## Essential Information

Type  
**Land (For Sale)**

Status  
**Current**

MLS  
**419358**

Listing Type  
**Low Density  
Residential**

**Key Details**

|                        |                        |                 |                  |                                  |
|------------------------|------------------------|-----------------|------------------|----------------------------------|
| Width<br><b>175.00</b> | Depth<br><b>150.00</b> | Bed<br><b>0</b> | Bath<br><b>0</b> | Block & Parcel<br><b>32B,150</b> |
| Acreage<br><b>0.45</b> |                        |                 |                  |                                  |
| Den<br><b>No</b>       | Sq.Ft.<br><b>0.00</b>  |                 |                  |                                  |

**Additional Features**

|                             |  |                      |
|-----------------------------|--|----------------------|
| Views<br><b>Garden View</b> | Zoning<br><b>Low Density<br/>residential</b> | Soil<br><b>Other</b> |
|-----------------------------|--|----------------------|