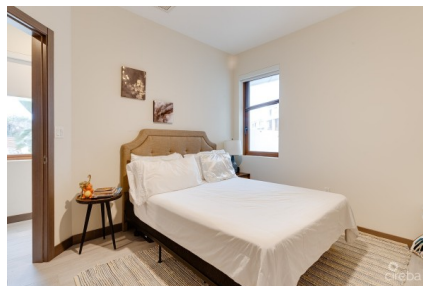
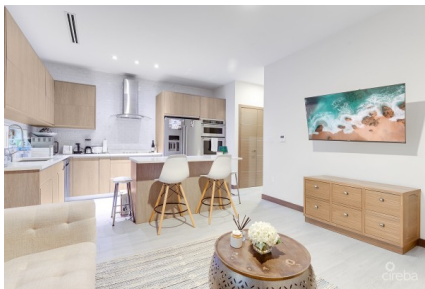


## ARVIA ONE BED PLUS DEN

Prospect / Newlands, Cayman Islands

MLS# 419145

**CI\$575,000**





**Debi Bergstrom**  
dbergstrom@edgewater.ky

Discover the perfect blend of comfort, convenience, and modern living in this beautifully designed one-bedroom plus den apartment, located in the highly sought-after gated community of Arvia. Built in 2021, this contemporary residence offers a thoughtfully designed layout, ideal for professionals or couples looking for a stylish and secure home. Set within a meticulously managed and landscaped complex, residents enjoy access to top-tier amenities, including a state-of-the-art gym, a dedicated children’s play area, a tennis court, and an Olympic-size swimming pool. Whether you're looking to stay active, relax by the pool, or enjoy family-friendly facilities, Arvia offers something for everyone. Perfectly positioned within walking distance to all essential conveniences, you’ll have grocery stores, restaurants, a liquor store, hairdressers, a doctor’s office, and more just minutes from your doorstep. With on-site property management ensuring the community remains pristine, this is a rare opportunity to own in one of the area's most desirable developments. Don’t miss your chance to experience modern, low-maintenance living in a secure and vibrant community. Contact us today to arrange a viewing!

Essential Information

|                        |         |        |              |
|------------------------|---------|--------|--------------|
| Type                   | Status  | MLS    | Listing Type |
| Residential (For Sale) | Current | 419145 | Condominium  |

Key Details

|     |            |                |
|-----|------------|----------------|
| Bed | Bath       | Block & Parcel |
| 1   | 1          | 22E,460V1H96   |
| Den | Year Built | Sq.Ft.         |
| No  | 2021       | 921.00         |

Additional Features

|           |             |            |             |
|-----------|-------------|------------|-------------|
| Lot Size  | Views       | Foundation | Floor Level |
| 0.00      | Garden View | Slab       | 1           |
| Furnished |             |            |             |
| Yes       |             |            |             |