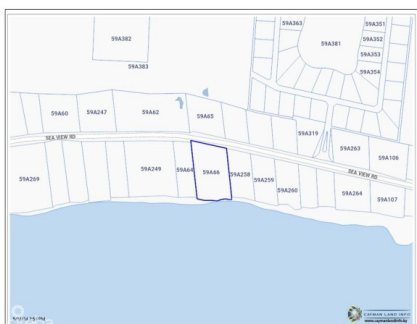
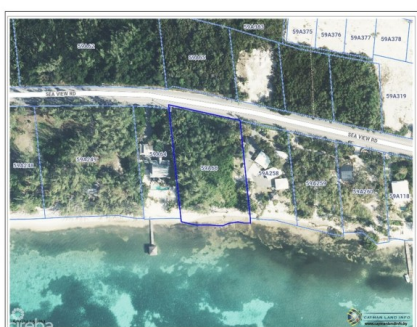


## EXCLUSIVE BEACHFRONT ESTATE PARCEL ON FRANK SOUND - 200 FT OF PRISTINE BEACHFRONT!

Midland East, Cayman Islands

MLS# 418325

**CI\$1,850,000**



**Debi Bergstrom**

dbergstrom@edgewater.ky

This expansive beachfront estate parcel on Frank Sound offers 200 ft of stunning shoreline with a generous 300 ft depth extending to the main road. Whether you envision a luxurious estate home or a 30-bedroom condo complex, this prime piece of land provides ample space for development, while ensuring complete privacy. Utilities, including city water and electricity, are readily accessible from the main road, making the building process smooth and convenient. Located in a tranquil and environmentally protected area, this parcel offers incredible snorkelling right at your doorstep, surrounded by the unspoiled beauty of Frank Sound. Perfect for those seeking peace, privacy, and a unique development opportunity off the beaten path.

## Essential Information

Type	Status	MLS	Listing Type
Land (For Sale)	Current	418325	Low Density Residential

Key Details

Width	Depth	Bed	Bath	Block & Parcel
200.00	300.00	0	0	59A,66
Acreage				
1.25				
Den	Sq.Ft.			
No	0.00			

Additional Features

Views	Zoning	Sea Frontage	Road Frontage
Beach Front	Low Density residential	198	200
Soil			
Sand			