



**EDGEWATER GROUP**  
REAL ESTATE & DEVELOPMENT

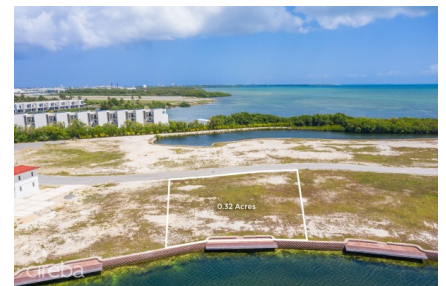
43 Vibert Bodden Drive, P.O. Box 30132 SMB George Town, Grand Cayman KY1-1201  
Cayman Islands, British West Indies.  
+1 (345) 946-3343  
info@edgewater.ky |

## **HARBOUR REACH LOT 518, 0.32 ACRES, CANAL FRONT**

Prospect / Newlands, Cayman Islands

MLS# 416007

**CI\$639,500**





**Debi Bergstrom**  
 dbergstrom@edgewater.ky

Located within the new and exclusive community of Harbour Reach, this south-easterly facing canal front parcel benefits from soft morning sunlight and unobstructed views across the water. Complete with a 40-foot cantilevered boat dock and interlocking seawall, this parcel is ready and waiting for you to design and build your dream home. Harbour Reach lots are fully de-mucked, filled with compacted aggregate and safely retained by a unique "Keystone" sea wall, avoiding the need for expensive pilings (subject to engineering surveys). Secure gated access entering onto palm-lined roads with landscaping intertwined with jogging trails and walking paths. Strong covenants protect the quality of future development. An attractive investment with the upside of significant future appreciation and a great opportunity to make your home in one of Cayman's premier waterfront communities. Residents of Harbour Reach benefit from the newly completed Harbour Walk, a brand new mixed-use development within walking distance. This new community features a fantastic array of restaurants, bars, commercial offices, and multiple gyms, including a state-of-the-art yoga and spin studio and Hurley's Supermarket next door. All of this is within a three-minute walk from your future front door. What's more, five minutes by car and you can be at the airport or George Town, and four minutes by boat lands you in the middle of the North Sound, surrounded by stingrays. If this central location, close to everything that matters, appeals to you, reach out for additional information.

## Essential Information

Type <b>Land (For Sale)</b>	Status <b>Current</b>	MLS <b>416007</b>	Listing Type <b>Low Density Residential</b>
--------------------------------	--------------------------	----------------------	--

## Key Details

Width <b>104.00</b>	Depth <b>163.00</b>	Bed <b>0</b>	Bath <b>0</b>	Block & Parcel <b>22E,518</b>
Acreage <b>0.32</b>				
Den <b>No</b>	Sq.Ft. <b>0.00</b>			

## Additional Features

Views <b>Canal Front</b>	Zoning <b>Low Density residential</b>	Sea Frontage <b>85</b>	Road Frontage <b>104</b>
-----------------------------	--	---------------------------	-----------------------------

Soil  
**Marl**