



EDGEWATER GROUP
REAL ESTATE & DEVELOPMENT

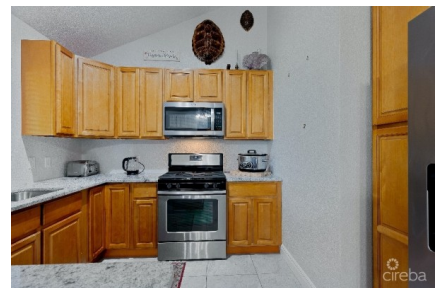
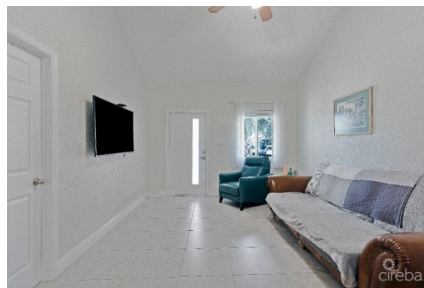
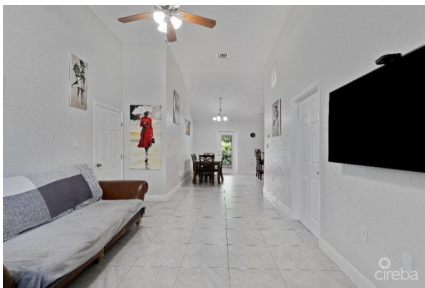
43 Vibert Bodden Drive, P.O. Box 30132 SMB George Town, Grand Cayman KY1-1201
Cayman Islands, British West Indies.
+1 (345) 946-3343
info@edgewater.ky |

DELIGHTFUL FAMILY HOME ON SADDLEWOOD DRIVE IN NEWLANDS

Savannah, Cayman Islands

MLS# 417360

CI\$625,000





Debi Bergstrom
 dbergstrom@edgewater.ky

New to the market, introducing this charismatic 3 bedroom 2 bath family home of 1555 square feet which is now offered for sale on Saddlewood Drive. This property offers significantly more than the nearby homes in almost all respects. It is well located on the largest lot in the subdivision. Vaulted ceilings add to the open floor plan. New stainless steel appliances highlight the modern kitchen. There is also new hurricane shutters throughout, and energy-efficient foam insulation will help you keep the cost of electricity down. The 2 zone air conditioning system helps you manage the energy use to your liking. This is a great opportunity for you to own your own home with everything that you need in a fantastic location. It is very near to Country Side Shopping Center as well as the east-west arterial bypass road for an easy ride into George Town. This lovely home has a gorgeous fenced-in yard for your kids and pets as well as a spacious 250 sq. ft screened-in porch to add to the family ambience. Mature fruit trees are already in place on the spacious lawn for your kids to play, along with a stand alone storage shed anchored on its own concrete foundation. It is being sold fully furnished including TV sets - so bring your clothes and move right in. Don't miss the chance to view this attractive opportunity. It won't last long so call for an appointment to view. Why rent when you can own your own charming home?

Essential Information

Type Residential (For Sale)	Status Reduced	MLS 417360	Listing Type Single Family Home
---------------------------------------	--------------------------	----------------------	---

Key Details

Bed 3	Bath 2	Block & Parcel 27D,429H2/H3
Acreage 0.15		
Den No	Year Built 2019	Sq.Ft. 1555.00

Additional Features

Lot Size 0.15	Views Garden View	Foundation Slab	Zoning Low Density residential
-------------------------	-----------------------------	---------------------------	--