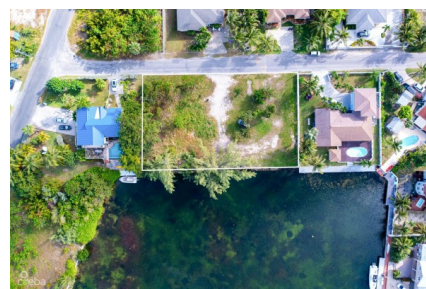


## LOCH LOMOND WATERFRONT LAND 0.5280 ACRE

Spotts, Cayman Islands

MLS# 417321

**CI\$760,000**





**Debi Bergstrom**  
dbergstrom@edgewater.ky

Loch Lomond Way Development Lot - Discover an unparalleled opportunity with this pristine 0.5280-acre waterfront land nestled in the quiet serene neighborhood of Loch Lomond Way. Boasting 200 feet of water and road frontage, this property presents an exceptional opportunity for a small waterfront development of 8-10 units or explore the potential for further subdivision, the possibilities are endless. Situated just 5 minutes away from Countryside shopping center and the vibrant Grand Harbour with the new Harbour Walk Plaza; shops, restaurants, and amenities, convenience is at your fingertips. Revel in the tranquility of the surroundings while still enjoying the close proximity to key attractions such as Rum Point, Kaibo, George Town Yacht Club and Camana Bay, all within quick & easy reach especially by boat! With a prime location granting swift access to the North Sound Ocean, indulge in the allure of waterfront living, diving, snorkeling, or just relaxing on a Sunday fishing or boating trip! Additionally, the property's strategic positioning ensures a mere 10-minute commute to George Town, facilitating easy access to the Camana Bay's shops and restaurants. This beautiful, positioned generously sized property is filled to road level and cleared ready to build on. It includes an interconnecting seawall along the boundary of the property ready. Incredible open water views from your back garden! This land is ready for you to make your dreams a reality! The exclusive offering epitomizes a fantastic selling proposition, presenting an idyllic blend of serenity, convenience, and investment potential. Live the life that YOU deserve by the water on this absolutely stunning ever growing island, Grand Cayman. Contact me today for further information on how to secure your piece of paradise. Enrich your portfolio and lifestyle with the beautiful promise of Loch Lomond Waterfront Land. How do you want to live your life?

Essential Information

Type	Status	MLS	Listing Type
Land (For Sale)	Current	417321	Med Density Residential

Key Details

Width	Depth	Bed	Bath	Block & Parcel
200.00	115.00	0	0	24E,478
Acreage				
0.53				
Den	Sq.Ft.			
No	0.00			

Additional Features

Views  
**Water Front**

Sea Frontage  
**200**

Road Frontage  
**200**