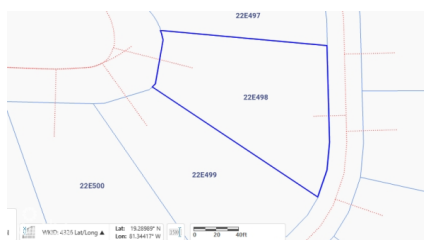
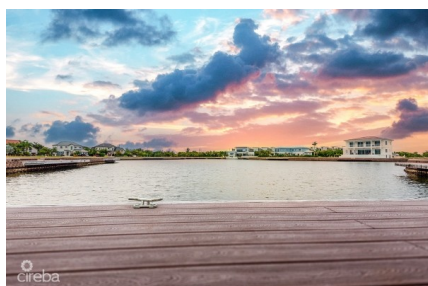


HARBOUR REACH LAND PARCEL

Prospect / Newlands, Cayman Islands

MLS# 416715

CI\$750,000





Debi Bergstrom
dbergstrom@edgewater.ky

Imagine beautiful sunset views from this idyllic west facing lot in the gated community of Harbour Reach in Grand Harbour. Includes plans for a stunning 5,750sq ft house designed by renowned architects Trio Architecture. Planning permission approved & strata approved. Construction drawings complete, along with solar, pool & landscape design & interior design concept. The unique shape at the widest part of the canal together with the location of the lot provides impressive street frontage and a beautiful view over the lagoon portion of the Harbour Reach canal - the widest part of the canal & greatest distance from opposite side neighbours. The rear of the property faces west for afternoon sun in the pool and beautiful sunset views across the water. Boat dock included for direct access onto the north sound.Total lot size 14,648 sq ft / 0.34 acres.

Essential Information

Type	Status	MLS	Listing Type
Land (For Sale)	Current	416715	Low Density Residential

Key Details

Width	Depth	Bed	Bath	Block & Parcel
85.70	148.00	0	0	22E,498
Acreage				
0.34				
Den	Sq.Ft.			
No	0.00			

Additional Features

Views	Zoning	Sea Frontage	Road Frontage
Canal Front, Canal View	Low Density residential	75	136
Soil			
Other			