



**EDGEWATER GROUP**  
REAL ESTATE & DEVELOPMENT

43 Vibert Bodden Drive, P.O. Box 30132 SMB George Town, Grand Cayman KY1-1201  
Cayman Islands, British West Indies.  
+1 (345) 946-3343  
info@edgewater.ky |

### 3.235-ACRE DEVELOPMENT PARCEL WITH OPERATIONAL FARM

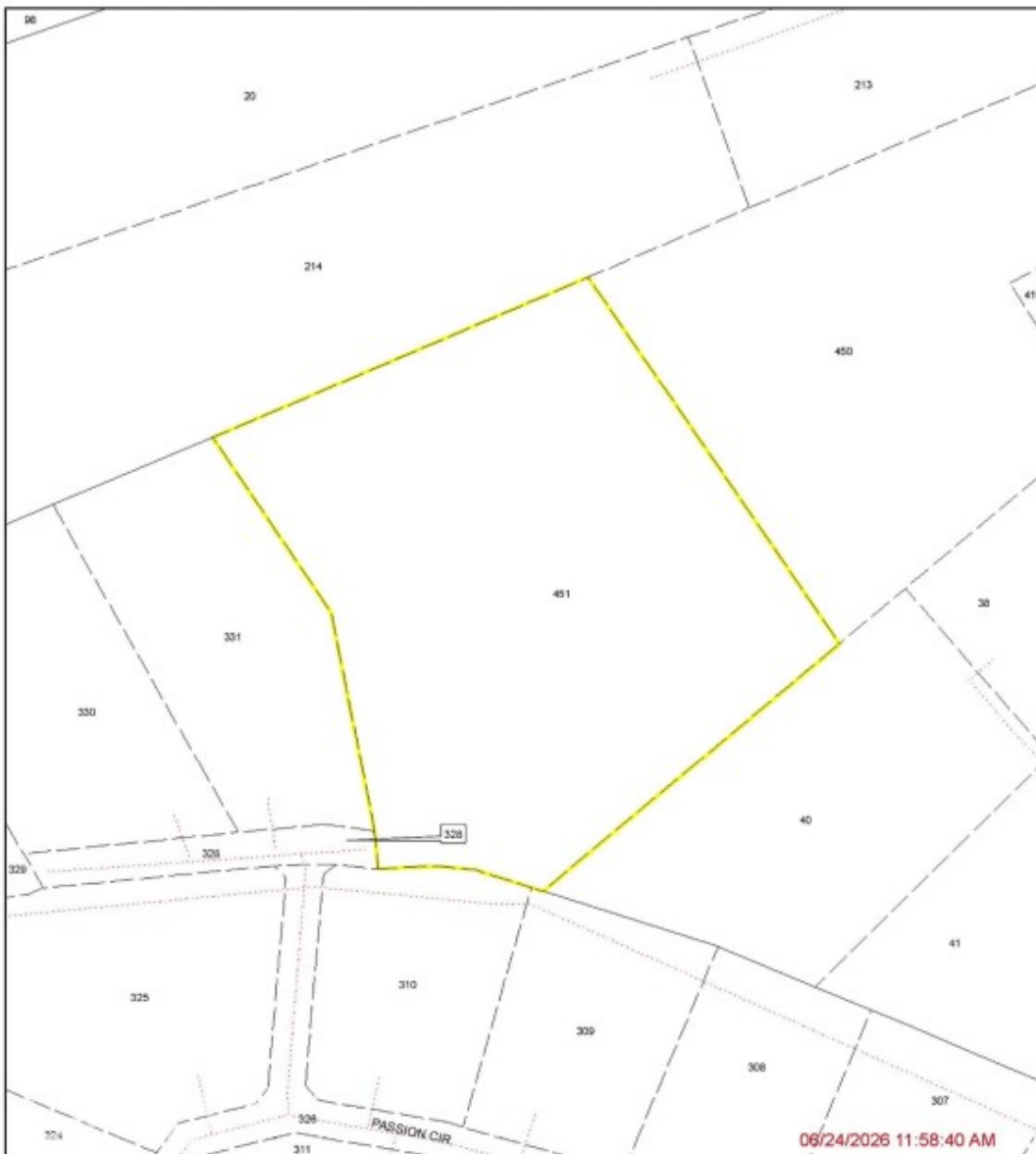
Bodden Town, Cayman Islands

MLS# 420980

**CI\$1,575,000**

**REGISTRY MAP EXTRACT**  
SECTION : BODDEN TOWN  
Block/Parcel(s) : '43E 451'  
Last Mutation Date: 27/3/2026  
CAYMAN LAND INFO

Registry Map Extracts must be printed to fit a paper size of 8.5" x 11" in order to retain a scale of 1:1,250  
Lands and Survey Department © Cayman Islands Government. All Rights Reserved.  
Reproduction in whole or in part by any means is prohibited without prior written permission from the Lands & Survey Department.  
Lands & Survey Department, P.O. Box 120, Grand Cayman KY1-9001, Cayman Islands. Tel: 1 (345) 244-3420 | Web: www.caymanlandinfo.ky





**Debi Bergstrom**  
 dbergstrom@edgewater.ky

Excellent opportunity for residential or agricultural development, with the added benefit of a fully operational, income-generating egg farm already in place. Zoned Agriculture/Residential, the property offers flexibility for a buyer looking to subdivide, build out, or hold for future development. The land is partially treed and includes registered road access. Well-positioned to benefit from the planned East-West Arterial expansion (Phases 2 & 3), which will significantly improve connectivity to George Town and the wider island. A rare opportunity to secure a significant parcel in a rapidly evolving corridor with a fully operational farm as an added advantage.

## Essential Information

|                        |            |               |                                |
|------------------------|------------|---------------|--------------------------------|
| Type                   | Status     | MLS           | Listing Type                   |
| <b>Land (For Sale)</b> | <b>New</b> | <b>420980</b> | <b>Low Density Residential</b> |

## Key Details

|               |               |          |          |                |
|---------------|---------------|----------|----------|----------------|
| Width         | Depth         | Bed      | Bath     | Block & Parcel |
| <b>397.00</b> | <b>350.00</b> | <b>0</b> | <b>0</b> | <b>43E,451</b> |
| Acreage       |               |          |          |                |
| <b>3.24</b>   |               |          |          |                |
| Den           | Sq.Ft.        |          |          |                |
| <b>No</b>     | <b>0.00</b>   |          |          |                |

## Additional Features

|             |                                |
|-------------|--------------------------------|
| Views       | Zoning                         |
| <b>None</b> | <b>Agriculture/Residential</b> |