



EDGEWATER GROUP
REAL ESTATE & DEVELOPMENT

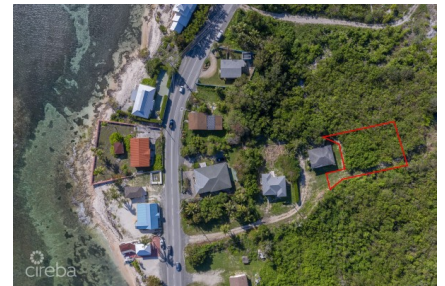
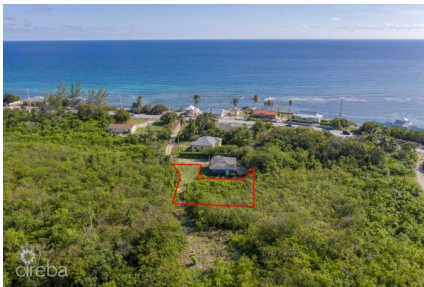
43 Vibert Bodden Drive, P.O. Box 30132 SMB George Town, Grand Cayman KY1-1201
Cayman Islands, British West Indies.
+1 (345) 946-3343
info@edgewater.ky |

RESIDENTIAL LAND LOT, STEPS FROM THE SEA

Breakers, Cayman Islands

MLS# 420939

CI\$150,000





Debi Bergstrom
 dbergstrom@edgewater.ky

Residential Land Lot | 0.2299 acre | Sea Feather Lane | Breakers, Grand Cayman An excellent opportunity to build your dream home in one of Cayman’s most tranquil and growing seaside communities, in the district of Breakers, Grand Cayman! This 0.2299 acre lot has been recently cleared and sits at approximately 12 ft above sea level on a solid rock foundation. With a permissible buildable footprint of up to 3,000 sq. ft., this is an ideal site to build a custom island home, with exceptional potential for a 2-storey build to maximise those stunning ocean views. Located just steps from the sea, a convenience store, local restaurants, and popular fish-fry hot spots, the property offers easy access to some of Cayman’s best lifestyle amenities. It is approximately 15 minutes from world-class dive sites in the Eastern Districts, 20 minutes to Countryside Shopping Village in Savannah (offering shops, cafes, restaurants, a gym, Fosters Supermarket, ALT hardware store, Animal House pet store, beauty salons and more), about 15 minutes to Rum Point and 45 minutes to central George Town. Access to the lot is provided by a registered vehicular right of way. A land study is available on request, including an optimal 2-storey buildable floor plan! Whether you are looking to build now or land bank for the future, this property offers strong long-term potential in a beautiful location and at a competitive price point! Get in touch for more information or to schedule a private site visit today! Google Map Pin: <https://maps.app.goo.gl/ryFHeGMMxXoApdUS7> Agent owned.

Essential Information

Type Land (For Sale)	Status New	MLS 420939	Listing Type Low Density Residential
--------------------------------	----------------------	----------------------	--

Key Details

Width 111.50	Depth 89.82	Bed 0	Bath 0	Block & Parcel 52C,94
Acreage 0.23				
Den No	Sq.Ft. 0.00			

Additional Features

Views Ocean View	Zoning Low Density residential	Soil Rock
----------------------------	--	---------------------