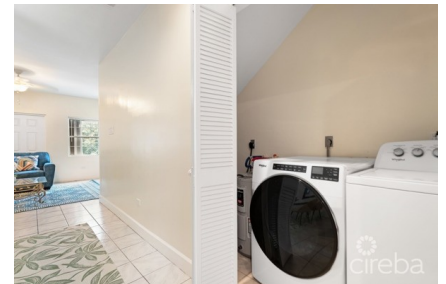


PARK VIEW COURT, PHASE ONE - LOCATION CLOSE TO SMB

George Town Central, Cayman Islands

MLS# 420852

CI\$415,000



Debi Bergstrom
dbergstrom@edgewater.ky

Superb price for a 2 bed townhouse very close to SMB making access to the Mile, Camana Bay and George Town all within walking distance. KIRKS supermarket on your doorstep. This gated complex is a small community of just 15 units, fully fenced. Large back patio (that can be screened) and pool. Hurricane shutters on all windows. 2 zones of AC – one for upstairs, and one for downstairs making AC management very cost effective. Excellent rental investment because of location and the perfect first home. Queen bed sets in both bedrooms, new sofas, rugs, dining chairs, as well as brand new stove and dishwasher. Large flat screen wall mounted TV. Contact to view right away!

Essential Information

Type	Status	MLS	Listing Type
Residential (For Sale)	New	420852	Condominium

Key Details

Bed	Bath	Block & Parcel
2	2	13D,273H8
Den	Year Built	Sq.Ft.
No	1999	1110.00

Additional Features

Lot Size	Views	Foundation	Floor Level
0.00	Garden View	Slab	1
Furnished			
Yes			