



EDGEWATER GROUP
REAL ESTATE & DEVELOPMENT

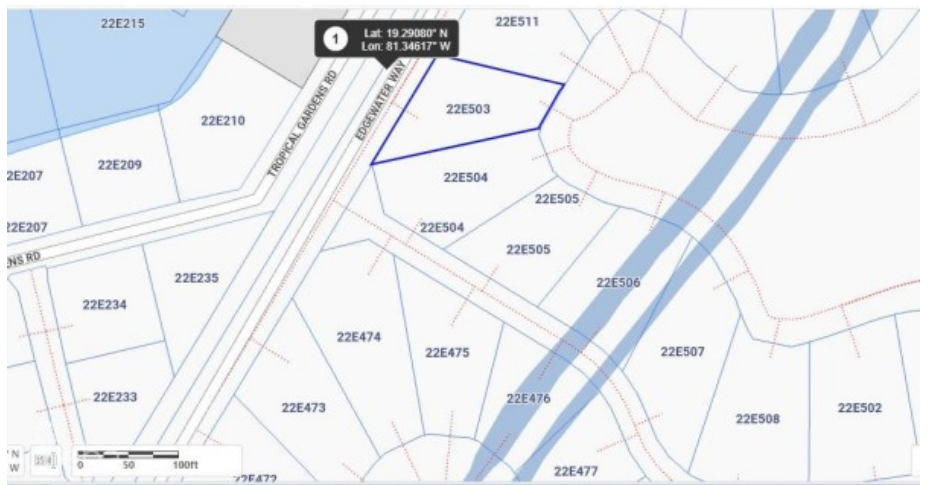
43 Vibert Bodden Drive, P.O. Box 30132 SMB George Town, Grand Cayman KY1-1201
Cayman Islands, British West Indies.
+1 (345) 946-3343
info@edgewater.ky |

PRIME LOCATION CANAL FRONT HARBOUR REACH

Prospect / Newlands, Cayman Islands

MLS# 419227

CI\$539,000





Debi Bergstrom
 dbergstrom@edgewater.ky

Prime location, in a sought-after community on the canal, in a serene environment, sounds like paradise & It Is paradise. Canal view house lot in the prestigious Harbour Reach community in Grand Harbour. Harbour Reach is Canal lot community with direct access to the North Sound with a cantilevered 40 foot dock, this and these lots are all filled with compacted aggregate and safety retained by a keystone seawall which means there is no need for the added expense of pilings. Harbour Reach offers a 24-7 manned gatehouse with strong covenants to ensure high standards and quality upliftment of this beautifully landscaped community conveniently located within walking distance of Harbour Walk complex & Grand Harbour Shopping Complex with restaurants, café, Hurleys supermarket. Cash purchase preferred.

Essential Information

Type Land (For Sale)	Status Back On The Market	MLS 419227	Listing Type Low Density Residential
--------------------------------	-------------------------------------	----------------------	--

Key Details

Width 95.00	Depth 135.00	Bed 0	Bath 0	Block & Parcel 22E,503A
Acreage 0.26				
Den No	Sq.Ft. 0.00			

Additional Features

Views Canal View	Zoning Low Density residential	Sea Frontage Yes
----------------------------	--	----------------------------