



EDGEWATER GROUP
REAL ESTATE & DEVELOPMENT

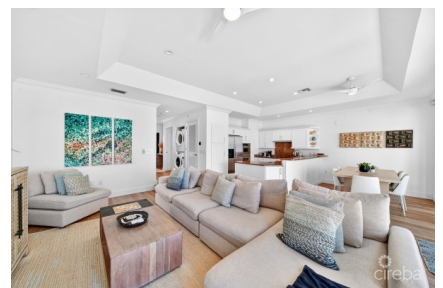
43 Vibert Bodden Drive, P.O. Box 30132 SMB George Town, Grand Cayman KY1-1201
Cayman Islands, British West Indies.
+1 (345) 946-3343
info@edgewater.ky |

PALACADES VILLA 1 ON PROSPECT POINT

Prospect / Newlands, Cayman Islands

MLS# 420695

US\$2,000,000





Debi Bergstrom
 dbergstrom@edgewater.ky

Tucked quietly along Prospect Point Road, Palacades 1 is one of those rare properties that truly delivers on both privacy and location. Set in an oceanfront enclave of just four villas, it feels exclusive and removed while only minutes from Grand Harbour, schools, and Seven Mile Beach. This end-unit villa captures uninterrupted Caribbean views creating a calm, effortless experience from the moment you walk in. The layout is open and functional, with natural flow between kitchen, living, and dining, ideal for both everyday family life and hosting. The interiors have been professionally decorated in a clean coastal aesthetic with nothing overdone, just a polished, relaxed style that suits the setting perfectly. Large windows bring in light throughout the day and keep the ocean front and center from multiple rooms. What really sets this property apart is not just the location and the view, but it's been properly maintained. Recent capital improvements include a new roof, upgraded balconies and railings, fresh exterior paint, a new front door, and new windows, giving buyers confidence in both the short and long term. Outside, the setting stays true to the boutique nature of the development: low density, quiet, and private, with direct ocean access and a private pool area. It's the kind of place where you don't feel overlooked, rushed, or crowded which is something that's becoming harder to find. For a luxury second home or a local family prioritizing space, privacy, and proximity, Palacades 1 hits a very specific, and very desirable, sweet spot.

Essential Information

Type	Status	MLS	Listing Type
Residential (For Sale)	New	420695	Standalone Home (Part of Strata)

Key Details

Bed	Bath	Block & Parcel
4	3.5	23C,168H1
Den	Year Built	Sq.Ft.
No	2002	3000.00

Additional Features

Lot Size	Views	Sea Frontage	Foundation
0.00	Ocean Front	350	Slab
Furnished			
Yes			