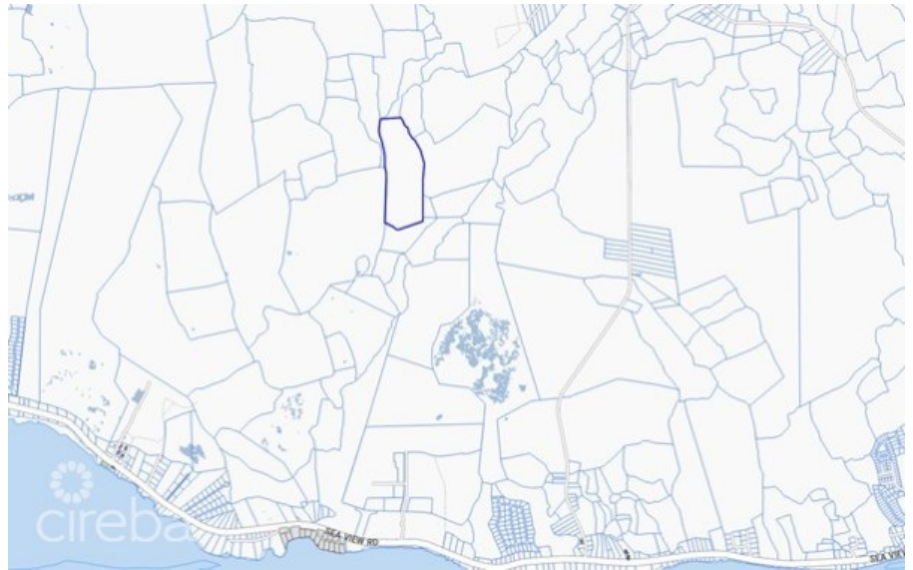


34 ACRES EAST END

East Inland, Cayman Islands

MLS# 420729

CI\$3,927,000



Debi Bergstrom

dbergstrom@edgewater.ky

Positioned in the heart of East End, this remarkable 34-acre parcel presents a rare chance to secure a substantial tract of land in one of Cayman’s most up-and-coming areas. With a 30-foot road access already paid for and supporting documentation in place, much of the heavy lifting has been done—offering a clear path for future development. This is truly a developer’s dream, with ample space and flexibility to bring a wide range of visions to life. Whether you’re considering a residential community, private estate, or a long-term investment hold, the possibilities here are endless. The land also lends itself exceptionally well to farming or agricultural use, making it equally attractive for those seeking a more sustainable or income-producing venture. Large parcels with this level of potential, accessibility, and value—just under \$4 million—are becoming increasingly hard to find in East End. An opportunity like this doesn’t come around often.

Essential Information

Type	Status	MLS	Listing Type
Land (For Sale)	Current	420729	Agriculture

Key Details

Width	Depth	Bed	Bath	Block & Parcel
755.79	2166.72	0	0	63A,47
Acreage				
34.00				
Den	Sq.Ft.			
No	0.00			

Additional Features

Views
Inland