



**EDGEWATER GROUP**  
REAL ESTATE & DEVELOPMENT

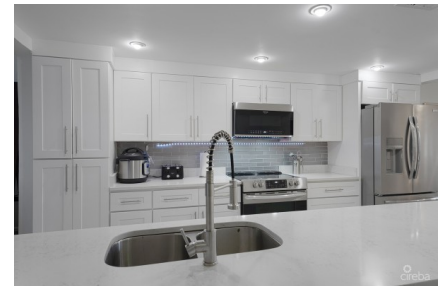
43 Vibert Bodden Drive, P.O. Box 30132 SMB George Town, Grand Cayman KY1-1201  
Cayman Islands, British West Indies.  
+1 (345) 946-3343  
info@edgewater.ky |

## LIME TREE BAY TOWNHOUSE 2 BED 2.5 BATH SMB CORRIDOR

Seven Mile Beach, Cayman Islands

MLS# 420574

**CI\$1,175,000**





**Debi Bergstrom**  
 dbergstrom@edgewater.ky

Very nicely upgraded townhouse with a crisp white/neutral tone throughout. This meticulously maintained freehold townhome at Lime Tree Bay, boasting 2 bedrooms upstairs (one with a king electric bed) and a second-floor balcony overlooking the water, with its 2.5 bathrooms, is exceptional. The unit is flooded with natural light and offers generously sized bedrooms, each with its ensuite bathroom. Additionally, there's a convenient half bath, a spacious open and modern kitchen, and plenty of room for comfortable living that has a leather sofa with lazy boy, and electric blind in the large patio door. Situated near the canal with boat dock, the patio provides a stunning view onto the well-manicured grounds with a nice outdoor sofa set and a BBQ, and within the water. Moreover, this unit has the added convenience of designated parking spaces right at your doorstep, making it a remarkable find! Lime Tree Bay offers a range of amenities, including a pool (heated during winter month), a clubhouse for residents, a gym, the option to rent a boat dock, a tennis court, and extensive green spaces. This pet-friendly community, nestled in the heart of the Seven Mile Beach corridor, is within walking distance of public beaches (walking distance to the Westin, Governor's Beach, Cost U Less, dining options, grocery stores, and entertainment venues. Lime Tree Bay has a gym, a dock, a tennis court, a large pool (heated during winter) and an ideal location. Agent owned

## Essential Information

Type	Status	MLS	Listing Type
<b>Residential (For Sale)</b>	<b>Increased</b>	<b>420574</b>	<b>Condominium</b>

## Key Details

Bed	Bath	Block & Parcel
<b>2</b>	<b>2.5</b>	<b>11D,94H4</b>
Den	Year Built	Sq.Ft.
<b>No</b>	<b>1978</b>	<b>1318.00</b>

## Additional Features

Lot Size	Views	Sea Frontage	Floor Level
<b>0.00</b>	<b>Canal View</b>	<b>300</b>	<b>1</b>