



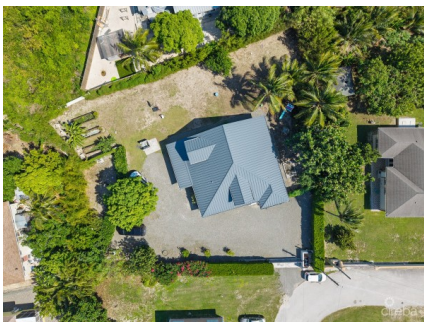
43 Vibert Bodden Drive, P.O. Box 30132 SMB George Town, Grand Cayman KY1-1201
Cayman Islands, British West Indies.
+1 (345) 946-3343
info@edgewater.ky |

ELEVATED, 6-BEDROOM SINGLE FAMILY HOME ON A MASSIVE PARCEL

Lower Valley, Cayman Islands

MLS# 420498

CI\$950,000





Debi Bergstrom
 dbergstrom@edgewater.ky

Welcome to this extensively renovated, solid block-built two-storey residence positioned on a massive parcel approximately *8 feet above sea level*, offering storm resilience, privacy, and exceptional long-term value in a quiet residential pocket of Bodden Town. Ideally located close to schools, shops, restaurants, beaches, and everyday amenities, this substantial 3,263 sqft home combines modern upgrades with structural integrity and lifestyle flexibility. Main Level Living - Designed for both comfort and entertaining, the ground floor features: * Covered entry porch * Open-concept living and dining areas with high ceilings * Modern kitchen with oversized island and waterfall quartz countertops * 4 bedrooms and 3 bathrooms (including the primary en-suite) * Dedicated home office * Laundry room * Walk-in closet and generous storage * Two covered rear patios ideal for outdoor living The primary suite includes a luxurious multi-head walk-in shower, while a secondary bath-room features a whirlpool tub for relaxation. Upper Level - Upstairs offers: * 2 additional bedrooms * 1 en-suite bathroom * Walk-in closet Perfect for extended family, guests, or teenagers seeking added privacy. Construction & Quality - This home stands out for its solid block construction, fire-resistant building materials, and energy-efficient spray foam insulated roof system — enhancing durability, temperature control, and long-term performance. Extensively renovated since 2019, upgrades include: * Impact-rated windows * Tile flooring throughout * Central A/C * Quality cabinetry * Quartz countertops * Propane gas system * Tankless water heater * Home security system * Irrigation system * Backup generator * Fully fenced boundaries * Mature fruit trees Outdoor Potential - The oversized parcel provides: * Ample parking for multiple vehicles * Expansive yard space * Mature landscaping * Room to add a pool or additional outdoor entertaining features A rare opportunity to secure a substantial, elevated, and structurally robust family home on a generously sized parcel in Bodden Town — offering modern upgrades, privacy, and room to expand in a peaceful residential setting.

Essential Information

Type	Status	MLS	Listing Type
Residential (For Sale)	Current	420498	Single Family Home

Key Details

Bed	Bath	Block & Parcel
6	4	38C,108

Acreage
0.31

Den No	Year Built 2002	Sq.Ft. 3263.00
------------------	---------------------------	--------------------------

Additional Features

Lot Size 0.31	Views Garden View	Foundation Slab	Furnished Yes
-------------------------	-----------------------------	---------------------------	-------------------------

Zoning
**Low Density
residential**