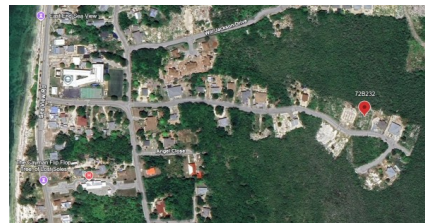
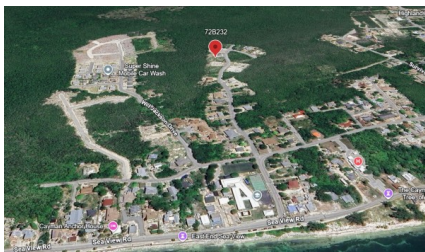


PRIME EAST END 0.23 ACRE MEDIUM DENSITY LOT NEAR EAST END PRIMARY SCHOOL

East End, Cayman Islands

MLS# 420466

CI\$125,000





Debi Bergstrom
 dbergstrom@edgewater.ky

This 0.2319-acre (10,101 sq ft) medium density residential lot is ideally located in East End, just minutes from East End Primary School and surrounding community amenities. Offering excellent development potential, the medium density zoning allows for duplex or multi-unit residential construction (subject to planning approval), making it an attractive opportunity for builders, investors, or first-time homeowners looking to develop in a growing area. The parcel is level and well-proportioned, providing flexibility in design and layout. Located in a quiet residential pocket, yet within convenient access to schools, shops, and the main East End roadway. East End continues to see steady demand for affordable residential development, making this a smart long-term investment or build-ready opportunity. Contact today for further details or to arrange a site visit.

Essential Information

Type Land (For Sale)	Status Current	MLS 420466	Listing Type Med Density Residential
--------------------------------	--------------------------	----------------------	--

Key Details

Width 85.00	Depth 136.00	Bed 0	Bath 0	Block & Parcel 72B,232
Acreage 0.23				
Den No	Sq.Ft. 0.00			

Additional Features

Views Garden View	Zoning Medium Density Residential	Road Frontage 85	Soil Rock
-----------------------------	---	----------------------------	---------------------