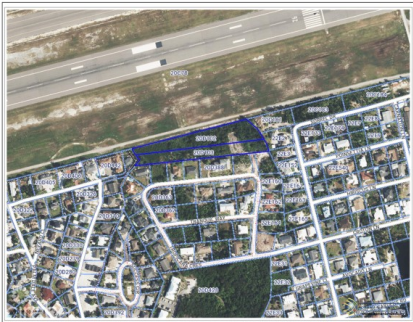


## TROPICANA CRESCENT LAND

George Town East, Cayman Islands

MLS# 420385

**CI\$2,190,000**



**Debi Bergstrom**

dbergstrom@edgewater.ky

Ideal location for small residential Development on outskirts of George Town. Land has good elevation between 5 to 8 feet, needs clearing and designated access Road needs to be constructed but the site offers tremendous opportunity for development or as land Bank. Motivated sellers so bring all offers.

## Essential Information

Type	Status	MLS	Listing Type
<b>Land (For Sale)</b>	<b>Current</b>	<b>420385</b>	<b>Med Density Residential</b>

## Key Details

Width	Depth	Bed	Bath	Block & Parcel
<b>776.00</b>	<b>202.00</b>	<b>0</b>	<b>0</b>	<b>20D,102/103</b>

Acreage  
**2.74**

Den  
**No**

Sq.Ft.  
**0.00**

## **Additional Features**

Views  
**Garden View**

Zoning  
**Medium Density  
Residential**

Road Frontage  
**30**

Soil  
**Marl**