



EDGEWATER GROUP
REAL ESTATE & DEVELOPMENT

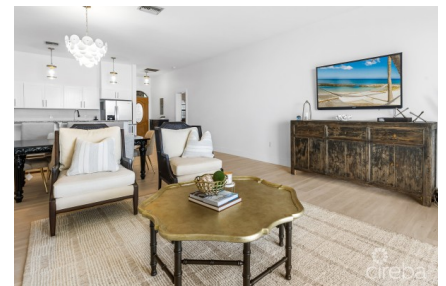
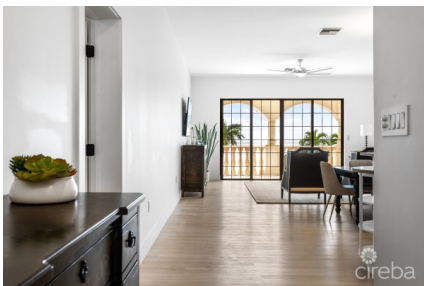
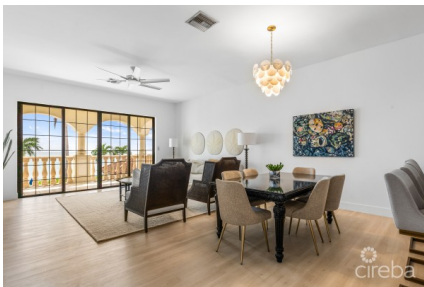
43 Vibert Bodden Drive, P.O. Box 30132 SMB George Town, Grand Cayman KY1-1201
Cayman Islands, British West Indies.
+1 (345) 946-3343
info@edgewater.ky |

VISTA CARIBE

Prospect / Newlands, Cayman Islands

MLS# 420373

CI\$745,000





Debi Bergstrom
 dbergstrom@edgewater.ky

Discover panoramic turquoise views across the South Sound at Vista Caribe. This is a rare opportunity, and a first chance, to own an individual unit at Vista Caribe. Residents benefit from roomy floorplans, high ceilings, unbelievable square footage plus substantial covered patios overlooking the immaculate grounds and sea views that transform from palest emerald to darkest blue. The Vista Caribe complex is a landmark in the Grand Harbour area, having been completed before the rapid growth of neighboring new developments. Soundly constructed, the Spanish inspired property is a well-built, solid structure of concrete block, poured cores and reinforced steel. There is the opportunity for improvements and upgrades to add new bespoke touches, but as is these units stand out from other comparable properties. Its location near to George Town allows for an easy commute which is appealing to both residents and potential renters. With the recently completed Harbour Walk plus The Shoppes at Grand Harbour just across the street, residents of the complex enjoy nearby amenities including restaurants, cafes, fitness centers, banks, plus a well-stocked supermarket and even fast-food options. On-site amenities include a swimming pool, cabana and deck for lounging. The pool views are coupled with beautiful gardens with plans for a kids play-area that enhance Vista Caribe’s appeal for families. Residents regularly enjoy watersport activities just steps away from their patio door with kayaking, paddleboarding and kite-surfing being most popular. #10 , a second floor unit, offers a generous square footage of 1,456 square feet with direct ocean front views and also having vaulted ceilings. As a top floor unit, #10 is steeped in natural light, plus a large dining area make this unit particularly attractive. The primary bedroom, with a large walk-in closet and ensuite bathroom, feature high ceilings throughout.

Essential Information

Type	Status	MLS	Listing Type
Residential (For Sale)	Current	420373	Condominium

Key Details

Bed	Bath	Block & Parcel
2	2	23B,80H10
Den	Year Built	Sq.Ft.
No	1998	1456.00

Additional Features

Lot Size
0.00

Views
**Water Front, Water
View**

Sea Frontage
323

Floor Level
1

Furnished
Yes