



**EDGEWATER GROUP**  
REAL ESTATE & DEVELOPMENT

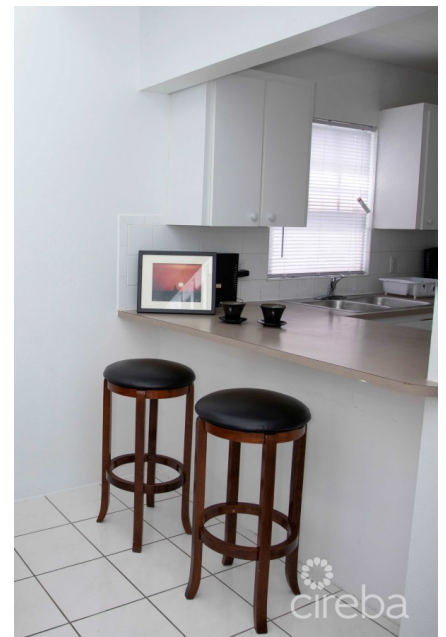
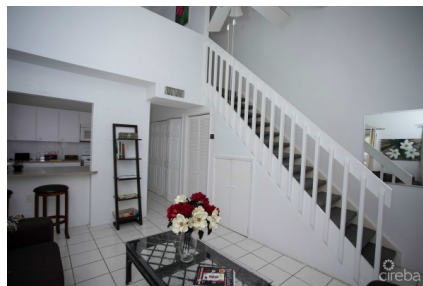
43 Vibert Bodden Drive, P.O. Box 30132 SMB George Town, Grand Cayman KY1-1201  
Cayman Islands, British West Indies.  
+1 (345) 946-3343  
info@edgewater.ky |

## MUST SEE PLEASANT PALMS 2 BEDROOM

West Bay North West, Cayman Islands

MLS# 419443

**CI\$395,000**





**Debi Bergstrom**  
 dbergstrom@edgewater.ky

Discover this beautifully maintained 2-bedroom, 2-bathroom corner townhouse, perfectly positioned in the heart of West Bay and designed for effortless island living. With 1,016 sq. ft. of bright, modern space, this fully furnished residence is move-in ready—ideal for first-time buyers, downsizers, or investors seeking a reliable, high-demand rental. The screened-in front porch welcomes you inside to an inviting open-plan living area filled with natural light. The kitchen features updated appliances, generous storage, and a clean, contemporary feel that makes everyday living a breeze. Upstairs, both bedrooms are generously sized, each offering ample closet space and its own private, well-appointed bathroom—perfect for comfort, privacy, or hosting guests. Set within a quiet, well-managed community with beautifully landscaped surroundings, this townhouse provides peace and convenience in equal measure. West Bay Public Beach and nearby shops are just minutes away, while the Esterley Tibbetts Highway offers fast, traffic-free access to Camana Bay and Seven Mile Beach in under 10 minutes. Whether you’re looking for a low-maintenance home or a turnkey investment in one of Cayman’s fastest-growing districts, this West Bay gem delivers outstanding value. Schedule your viewing today. \*Price Reduced below current appraisal! Move in ready!

## Essential Information

Type	Status	MLS	Listing Type
<b>Residential (For Sale)</b>	<b>Reduced</b>	<b>419443</b>	<b>Condominium</b>

## Key Details

Bed	Bath	Block & Parcel
<b>2</b>	<b>2</b>	<b>4D,454H1</b>
Den	Year Built	Sq.Ft.
<b>No</b>	<b>1998</b>	<b>1016.00</b>

## Additional Features

Lot Size	Views	Foundation	Floor Level
<b>0.00</b>	<b>Garden View</b>	<b>Slab</b>	<b>1</b>
Furnished			
<b>Yes</b>			