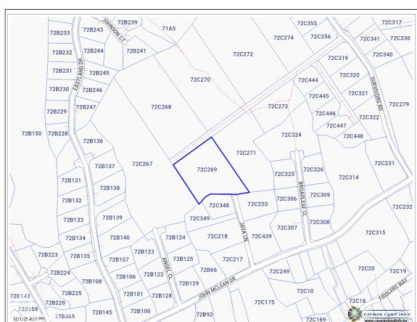


## 1.14 ACRES OF EAST END LAND

East End, Cayman Islands

MLS# 420121

**CI\$275,000**



**Debi Bergstrom**

dbergstrom@edgewater.ky

Opportunity to own this spacious 1.14 acre inland parcel positioned in East End, the quieter side of the Island, north of John McLean Drive. Zoned medium density residential, this lot provides flexibility for residential development and has indigenous vegetation. Mapping by caymanlandinfo.ky

## Essential Information

Type	Status	MLS	Listing Type
<b>Land (For Sale)</b>	<b>New</b>	<b>420121</b>	<b>Med Density Residential</b>

## Key Details

Width	Depth	Bed	Bath	Block & Parcel
<b>213.00</b>	<b>298.00</b>	<b>0</b>	<b>0</b>	<b>72C,269</b>

Acreage  
**1.14**

Den	Sq.Ft.
<b>No</b>	<b>0.00</b>

**Additional Features**

Views  
**Inland**