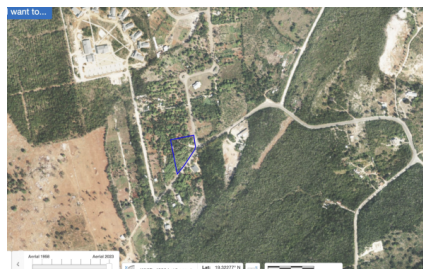
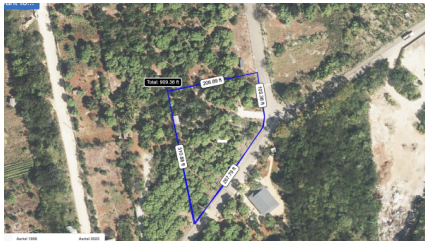


## RARE 1-ACRE FARM PARADISE IN UP-AND-COMING HIGH ROCK - EAST END'S HOTTEST FARMING LOCATION

East Inland, Cayman Islands

MLS# 420111

**CI\$325,000**





**Debi Bergstrom**  
dbergstrom@edgewater.ky

Just minutes from Health City, this lush 1-acre farm is bursting with mature, bearing fruit trees on legendary red Cayman soil: Coconut • Julie & Nam Doc mango • Avocado • Soursop • Papaya • Starfruit • Guinip • Banana & plantain groves Everything is already in place for effortless island farming: Full irrigation system • Private well + heavy-duty pump • City water connected • Large shed • Separate full bathroom with septic system • Fully fenced & gated Build your dream home surrounded by your own private orchard, create a boutique agro-tourism business, or simply land-bank in one of the smartest growth areas on island. In today’s red-hot East End market, turnkey acre farms this close to Health City are vanishing overnight. Schedule your private tour today – because tomorrow this one may be gone. Ready for immediate possession (Drone shot boundary lines are approximate; Lands and Registry map w/ measurements is accurate)

Essential Information

Type	Status	MLS	Listing Type
Land (For Sale)	New	420111	Agriculture

Key Details

Width	Depth	Bed	Bath	Block & Parcel
310.00	208.00	0	0	66A,102
Acreage				
1.00				
Den	Sq.Ft.			
No	0.00			

Additional Features

Views	Zoning	Road Frontage	Soil
Inland	Agriculture/Residential	367	Other