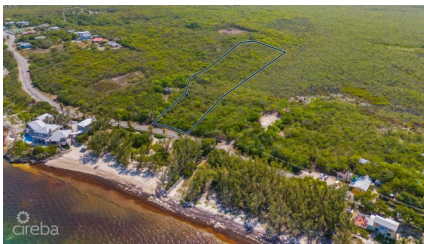


## EAST END LAND - 3.25 ACRES

East End, Cayman Islands

MLS# 419413

**US\$695,000**



**Debi Bergstrom**

dbergstrom@edgewater.ky

3.25 Acres. Prime Development Land in East End, Grand Cayman  
An exceptional opportunity awaits with this 3.25-acre parcel located in the serene and scenic East End of Grand Cayman. Whether you're a developer seeking your next project or an investor looking to secure land in one of the island's fastest-growing areas, this property offers outstanding potential.  
Property Highlights: • Size: 3.25 acres • Location: Peaceful East End, known for its natural beauty and growing appeal • Investment Value: Strong long-term appreciation potential in a steadily expanding area • Access: Convenient road access and close to essential infrastructure • Surroundings: Near beaches, diving sites, restaurants, and local attractions This land presents a rare chance to invest in Grand Cayman's future while enjoying the quiet charm of the East End. Whether you build now or hold for capital growth, this is a smart move in a sought-after location.

## Essential Information

Type <b>Land (For Sale)</b>	Status <b>Current</b>	MLS <b>419413</b>	Listing Type <b>Low Density Residential</b>
--------------------------------	--------------------------	----------------------	--

## Key Details

Width <b>170.00</b>	Depth <b>780.00</b>	Bed <b>0</b>	Bath <b>0</b>	Block & Parcel <b>75A,114</b>
Acreage <b>3.25</b>				
Den <b>No</b>	Sq.Ft. <b>0.00</b>			

## Additional Features

Views <b>Garden View</b>	Zoning <b>High Density Residential</b>	Road Frontage <b>125</b>	Soil <b>Other</b>
-----------------------------	---	-----------------------------	----------------------