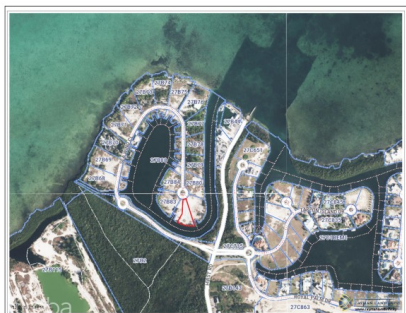


MANGROVE POINT CANALFRONT LOT

Savannah, Cayman Islands

MLS# 420058

CI\$460,000



Debi Bergstrom

dbergstrom@edgewater.ky

One of only a handful of canalfront lots available for sale under \$500,000. This parcel lot is in beautiful Mangrove Point in Newlands. Enjoy quiet living, quick access to North Sound playground and waterfront spots by boat, convenient shopping 5 minutes away and a safe harbour for your boat.

Essential Information

Type
Land (For Sale)

Status
Current

MLS
420058

Listing Type
**Low Density
Residential**

Key Details

Width 115.00	Depth 259.00	Bed 0	Bath 0	Block & Parcel 27B,162
Acreage 0.45				
Den No	Sq.Ft. 0.00			

Additional Features

Views Canal Front	Zoning Low Density residential	Sea Frontage 165	Road Frontage 31
Soil Marl			