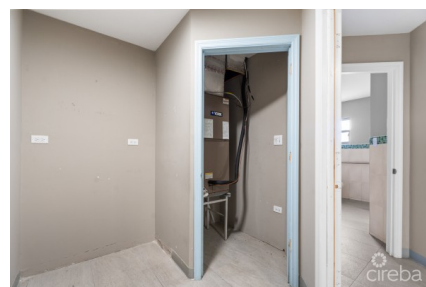
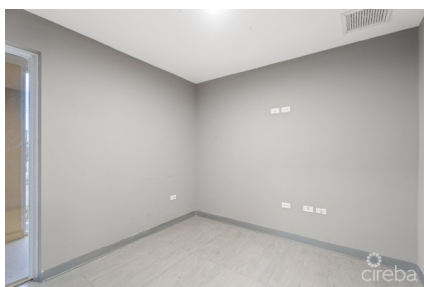
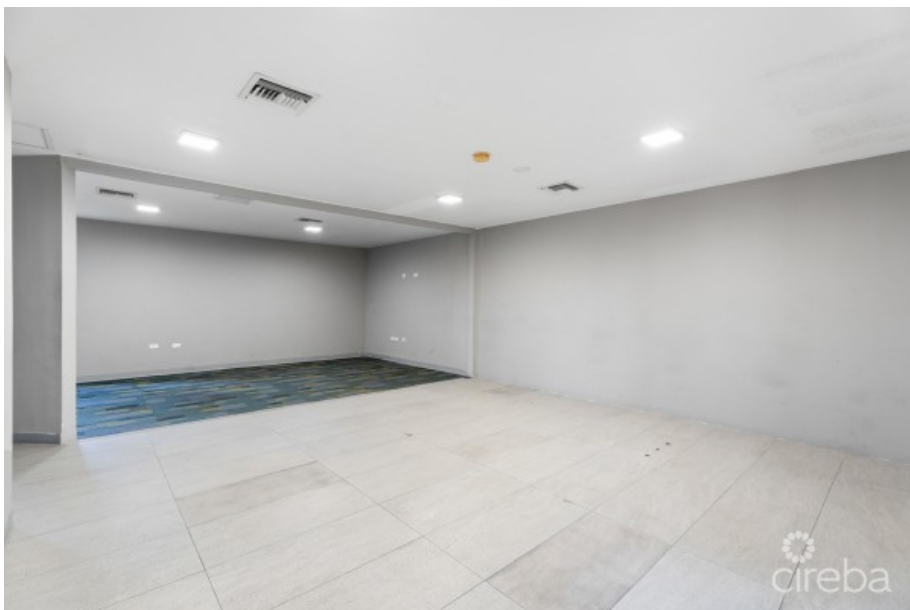


## **PALM GROVE MIXED USE COMMERCIAL SPACE- UNIT 6**

George Town South, Cayman Islands

MLS# 420045

**CI\$425,000**





**Debi Bergstrom**  
dbergstrom@edgewater.ky

Palm Grove Commercial Unit 6 Prime Second-Floor Space in the Heart of George Town Discover the perfect blend of convenience, visibility, and modern design at Palm Grove Commercial Unit 6. This 800 sq. ft. ground-floor suite is completely move-in ready and ideal for a wide range of businesses. The space features sleek ceramic tile flooring, a drop ceiling, and a private bathroom, creating a clean, professional environment from day one. Designed with efficiency in mind, the unit is solar-powered and pre-wired for all IT requirements, offering seamless connectivity and reduced operational costs. Part of the newly refurbished Palm Grove Commercial Building, a two-storey, 4,800 sq. ft. complex comprising six units, this property was fully renovated last year with: Enhanced insulation for superior soundproofing — no traffic or airport noise Hurricane-rated windows and doors for peace of mind A striking stone façade and upgraded block construction Solar panels providing long-term energy savings Serviced elevator, security system, ample parking, and wheelchair access Positioned at the high-traffic intersection of Smith Road and Huldah Avenue, Palm Grove enjoys unrivaled exposure in George Town’s commercial hub. Its central location places you minutes from the airport, hospitals, schools, restaurants, and retail — truly the center of everything.

Essential Information

Type	Status	MLS	Listing Type
Commercial (For Sale)	New	420045	Offices/Mixed Use

Key Details

Bed	Bath	Block & Parcel
0	0	14D,65H6
Acreage		
0.32		
Den	Year Built	Sq.Ft.
No	2011	800.00

Additional Features

Lot Size	Views	Foundation	Zoning
0.32	Inland	Slab	Commercial
Road Frontage			
225			