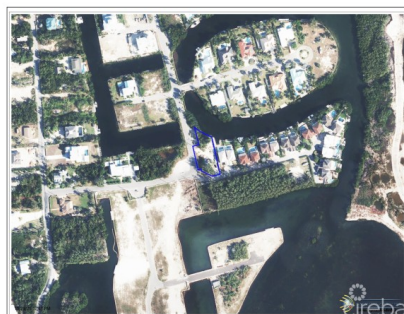


THE POINT AT PARADISE COVE 2, CANAL FRONT HOME

Prospect / Newlands, Cayman Islands

MLS# 419918

CI\$1,750,000





Debi Bergstrom
dbergstrom@edgewater.ky

Tucked away on a quiet, gated cul-de-sac within the peaceful community of The Point at Paradise Cove, this new canal-front residence is now underway, blending modern design with the ease of island living. Planned for completion mid-2026, this semi-detached home will feature 3,510 square feet of thoughtfully designed space, including 4 bedrooms, 4.5 bathrooms, a den, and a separate laundry room. Expansive impact-rated windows and 10-foot ceilings will fill each space with natural light, showcasing calm canal views and creating a seamless flow between indoors and out. The open-plan living area will extend to a private garden with a 25-foot pool and shaded patio, ideal for relaxed weekends or easy entertaining. Just beyond, a private boat dock will provide direct access to the North Sound. Built 8 feet above sea level using insulated concrete form (ICF) construction, the home is being developed with energy efficiency and hurricane resilience in mind. Spray-foam insulation, accessible roof trusses, a five-zone A/C system, and LED lighting throughout will deliver comfort and sustainability for years to come. With the new third lane improving access to and from George Town, The Point at Paradise Cove offers a prime location close to Grand Harbour, Harbour Walk, and the Cayman Islands Sailing Club. It's a setting that brings convenience, leisure, and community together. This home takes canal-front living takes on a new level of calm sophistication The Point at Paradise Cove isn't just a place to live, it's a place to belong.

Essential Information

Type	Status	MLS	Listing Type
Residential (For Sale)	Current	419918	Semi-Detached/Duplex/Triplex

Key Details

Bed	Bath	Block & Parcel
4	4.5	22D,317H1/H4
Acreage		
0.32		
Den	Year Built	Sq.Ft.
No	2026	4079.00

Additional Features

Lot Size	Views	Sea Frontage	Foundation
0.32	Canal Front	1	Slab
Garage			
1			