



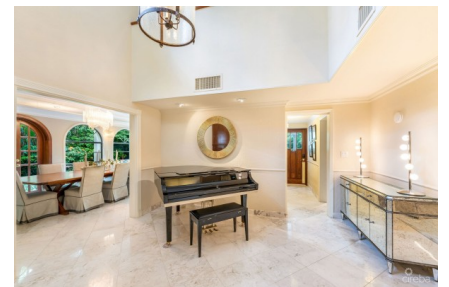
EDGEWATER GROUP
REAL ESTATE & DEVELOPMENT

43 Vibert Bodden Drive, P.O. Box 30132 SMB George Town, Grand Cayman KY1-1201
Cayman Islands, British West Indies.
+1 (345) 946-3343
info@edgewater.ky |

ANNE BONNY CRESCENT - CLASSIC COLONIAL WITH OUTDOOR ENTERTAINING

South Sound, Cayman Islands
MLS# 419760

CI\$1,975,000





Debi Bergstrom
 dbergstrom@edgewater.ky

Welcome to this timeless colonial-style residence, tucked away in the desirable South Sound community of Pirate Cove Estate, directly across from the Cayman Islands Tennis Club. Combining character, charm, and modern comfort, this home offers a truly inviting retreat. Step inside to custom wood finishes, elegant arched windows framing lush garden views, and thoughtfully designed living spaces. The main floor features a formal dining room, a comfortable living room, and a den, alongside a separate kitchen and guest washroom. A cozy bar room adds extra character, making the home ideal for both relaxation and entertaining. Upstairs, the home provides a private and comfortable retreat. The primary suite includes a spacious walk-in closet, a double vanity, and a large walk-in shower, with direct access to a terrace overlooking the lush gardens below. Two additional bedrooms share a well-appointed bathroom—one opens onto the terrace through elegant French doors, while the other features a custom closet—creating a practical and inviting layout for family or guests. Outdoors, the property shines as a private sanctuary. The covered patio includes a bar, dining, and lounge area—perfect for gatherings—while the expansive 35-foot pool is surrounded by lush, mature gardens cultivated over 40 years. Fully furnished and move-in ready, this two-story home on nearly half an acre offers 4,100 sq. ft. of comfortable living in one of Grand Cayman’s most established neighbourhoods.

Essential Information

Type	Status	MLS	Listing Type
Residential (For Sale)	Current	419760	Single Family Home

Key Details

Bed	Bath	Block & Parcel
3	3	21E,99

Acreage
0.46

Den	Year Built	Sq.Ft.
No	1987	4100.00

Additional Features

Lot Size	Views	Foundation	Furnished
0.46	Garden View	Slab	Yes

Zoning
Low Density residential