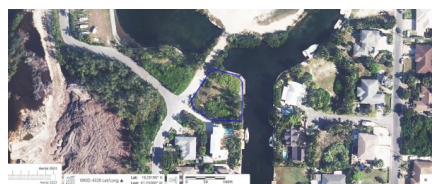


DOUBLE CANAL FRONTAGE OMEGA BAY LOT

Spotts, Cayman Islands

MLS# 419747

CI\$399,000



Debi Bergstrom

dbergstrom@edgewater.ky

Double Canal Frontage Omega Bay Lot at the end of Bay Island Avenue, situated opposite the junction with Roxborough Street. Close to Grand Harbour Shopping Complex & Harbour Walk with all the conveniences of cafe's, restaurants, grocery stores, and other retail stores.

Essential Information

Type	Status	MLS	Listing Type
Land (For Sale)	Current	419747	Low Density Residential

Key Details

Width	Depth	Bed	Bath	Block & Parcel
185.00	154.00	0	0	24E,632
Acreage				
0.31				
Den	Sq.Ft.			
No	0.00			

Additional Features

Views	Zoning	Sea Frontage	Road Frontage
Canal View	Low Density residential	Yes	30