



**EDGEWATER GROUP**  
REAL ESTATE & DEVELOPMENT

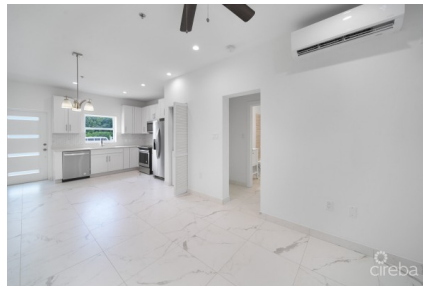
43 Vibert Bodden Drive, P.O. Box 30132 SMB George Town, Grand Cayman KY1-1201  
Cayman Islands, British West Indies.  
+1 (345) 946-3343  
info@edgewater.ky |

## THE POINT AT WATERCOURSE 1-BEDROOM

West Bay South, Cayman Islands

MLS# 419680

**CI\$379,000**





**Debi Bergstrom**  
 dbergstrom@edgewater.ky

The Point at Watercourse is a new and distinctive condominium development on the Northwest Point Road corridor of Grand Cayman. Located just minutes from 7 Mile Beach, the Point at Watercourse offers easy access to shopping, dining and recreation facilities. Villa # 11 is a 1-bedroom single-story residence, thoughtfully designed for style and ease of living. The open layout and natural light in this unit work together to create a spacious yet comfortable ambience. Interior finishes include 9 1/2ft ceilings, storage closets, porcelain floors, porcelain tile baseboards, solid wood doors, solid wood cabinetry, quartz countertops, energy efficient AC systems, stainless steel kitchen appliances and utility closet with washer and dryer. Engineered for strength and energy efficiency, the building itself is constructed of ICF blocks with steel reinforced and poured concrete centers. Each unit also has hurricane-rated windows & doors. Property amenities include a pool and pool deck.

### Essential Information

|                               |                |               |                    |
|-------------------------------|----------------|---------------|--------------------|
| Type                          | Status         | MLS           | Listing Type       |
| <b>Residential (For Sale)</b> | <b>Current</b> | <b>419680</b> | <b>Condominium</b> |

### Key Details

|           |             |                 |
|-----------|-------------|-----------------|
| Bed       | Bath        | Block & Parcel  |
| <b>1</b>  | <b>1</b>    | <b>2C,32H11</b> |
| Den       | Year Built  | Sq.Ft.          |
| <b>No</b> | <b>2024</b> | <b>616.00</b>   |

### Additional Features

|             |                    |             |             |
|-------------|--------------------|-------------|-------------|
| Lot Size    | Views              | Foundation  | Floor Level |
| <b>0.00</b> | <b>Garden View</b> | <b>Slab</b> | <b>1</b>    |