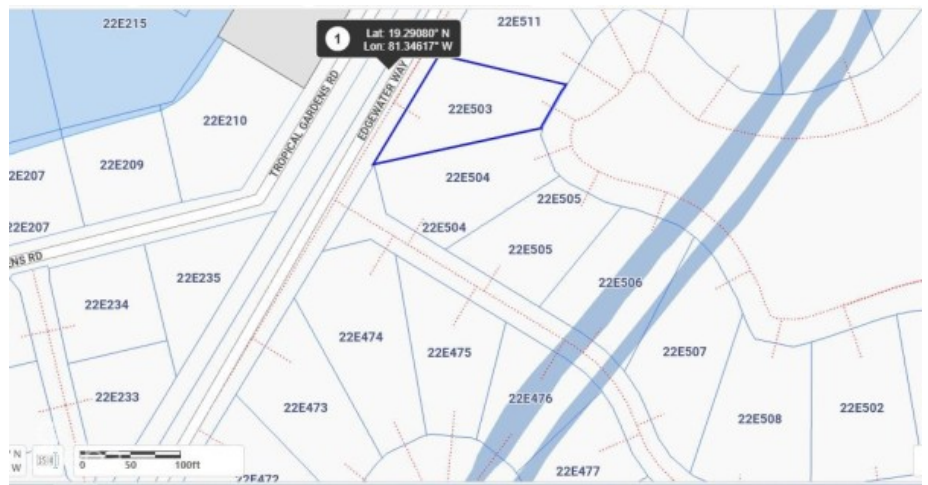


## HARBOUR REACH

Prospect / Newlands, Cayman Islands

MLS# 419227

**CI\$695,000**





**Debi Bergstrom**  
dbergstrom@edgewater.ky

Prime location, in a sought-after community on the canal, in a serene environment under CI 500K, sounds like paradise & It Is paradise. Canal view house lot in the prestigious Harbour Reach community in Grand Harbour. Harbour Reach is Canal lot community with direct access to the North Sound with a cantilevered 40 foot dock, this and these lots are all filled with compacted aggregate and safety retained by a keystone seawall which means there is no need for the added expense of pilings. Harbour Reach offers a 24-7 manned gatehouse with strong covenants to ensure high standards and quality upliftment of this beautifully landscaped community conveniently located within walking distance of Harbour Walk complex & Grand Harbour Shopping Complex with restaurants, café, Hurleys supermarket. Agent Owned

Essential Information

Type	Status	MLS	Listing Type
Land (For Sale)	Current	419227	Low Density Residential

Key Details

Width	Depth	Bed	Bath	Block & Parcel
95.00	135.00	0	0	22E,503A
Acreage				
0.26				
Den	Sq.Ft.			
No	0.00			

Additional Features

Views	Zoning	Sea Frontage
Canal View	Low Density residential	Yes