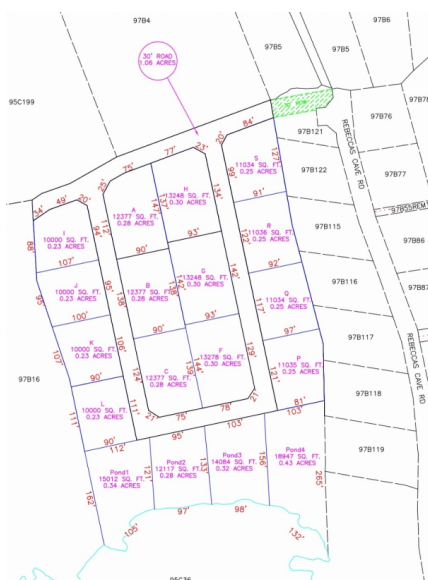


## ALEXANDER GROVE SUBDIVISION - CAYMAN BRAC - LOT R (INLAND)

Cayman Brac West, Cayman Islands

MLS# 415331

**CI\$44,144**





**Debi Bergstrom**  
dbergstrom@edgewater.ky

Alexander Grove is Cayman Brac's newest proposed sub-division. The developers aim to create a beautiful community that owners will be proud to be a part of. As you enter the neighbourhood, you'll be met with a sweeping, hand-crafted double-stone wall entranceway to welcome you home. This property is one of 14 in-land parcels in an area, close to some of the best amenities the island has to offer. The location brags some of the island's best culinary experiences the Brac, including staple and traditional local cuisines from local restaurants and also fine dining, live music, and good company from The Alexander Hotel which is only a short stroll away. Your evenings are sure to be fun-filled! You are also within walking distance of the only stretch of beach on the island! Perfect for a quiet intimate stroll along a peaceful beach, with only the sound of the water rolling onto the reef to keep you and yours, company. You may be lucky enough to experience the occasional bio-luminescence light show as the waves lap along the shoreline! As you make your way to the beach, pick up your favorite beverage at the local fine wine and spirit stores, as you walk by. Are you Caymanian and a first-time buyer? - Opportunity to take advantage of Stamp Duty Wavier Program offered by Government. This is an excellent investment choice that is sure to increase in value due to its location. Get on the property ladder now! Investors, looking for a place to build the perfect vacation home on a soul-charming island? - With the above, you're in an excellent location for rentals when you're not there. (Developers are in the planning stages of neighbourhood covenants.)

Essential Information

Type	Status	MLS	Listing Type
Land (For Sale)	Current	415331	Low Density Residential

Key Details

Width	Depth	Bed	Bath	Block & Parcel
122.40	84.70	0	0	97B,15LOTR
Acreage				
0.23				
Den	Sq.Ft.			
No	0.00			

Additional Features

Views	Zoning	Road Frontage
Inland	Low Density residential	122.4