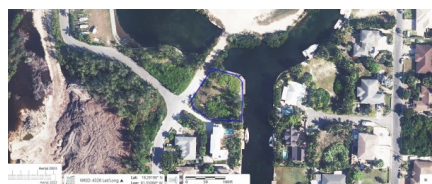


DOUBLE CANAL FRONTAGE OMEGA BAY LOT

Spotts, Cayman Islands

MLS# 419747

CI\$425,000



Debi Bergstrom

dbergstrom@edgewater.ky

Double Canal Frontage Omega Bay Lot at the end of Bay Island Avenue, situated opposite the junction with Roxborough Street. Close to Grand Harbour Shopping Complex & Harbour Walk with all the conveniences of cafe's, restaurants, grocery stores, and other retail stores.

Essential Information

Type
Land (For Sale)

Status
New

MLS
419747

Listing Type
**Low Density
Residential**

Key Details

Width
185.00

Depth
154.00

Bed
0

Bath
0

Block & Parcel
24E,632

Acreage
0.31

Den
No

Sq.Ft.
0.00

Additional Features

Views
Canal View

Zoning
**Low Density
residential**

Sea Frontage
Yes

Road Frontage
30